

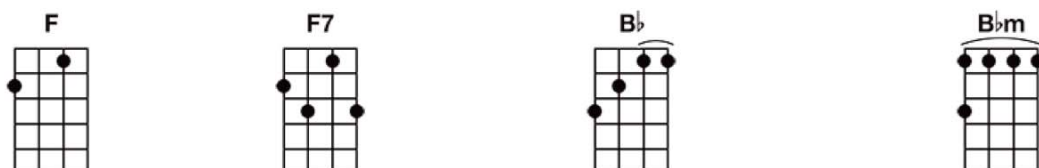
Bring It On Down to My House -----> Get more of Ukulele Bartt's charts at Bartt.net



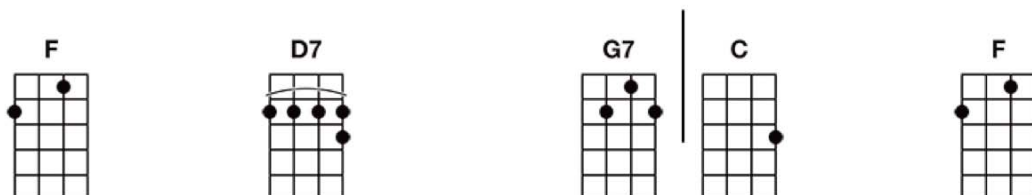
Bring it on down to my house honey, there ain't nobody home but me;



Bring it on down to my house honey, I need your company



Tom cat sittin' on the railroad track, He hollered at the Mama cat, she answered back,



"Bring it on down to my house honey, ain't nobody home but me!"

Bring it on down to my house honey, ain't nobody home but me;
 Bring it on down to my house honey, I need your company
 My gal Sal, she makes good pie; I eat so much I could nearly die;
 Bring it on down to my house honey, ain't nobody home but me
 Bring it on down to my house honey, ain't nobody home but me;
 Bring it on down to my house honey, I need your company
 Say old man, can ya play the fiddle? "Yes, by crackies, I can play a little!"
 Bring it on down to my house honey, ain't nobody home but me

This song was printed using

GoChords®

www.gochords.com

Copyright © 2009-2011. ChaseCreations LLC. All Rights Reserved.